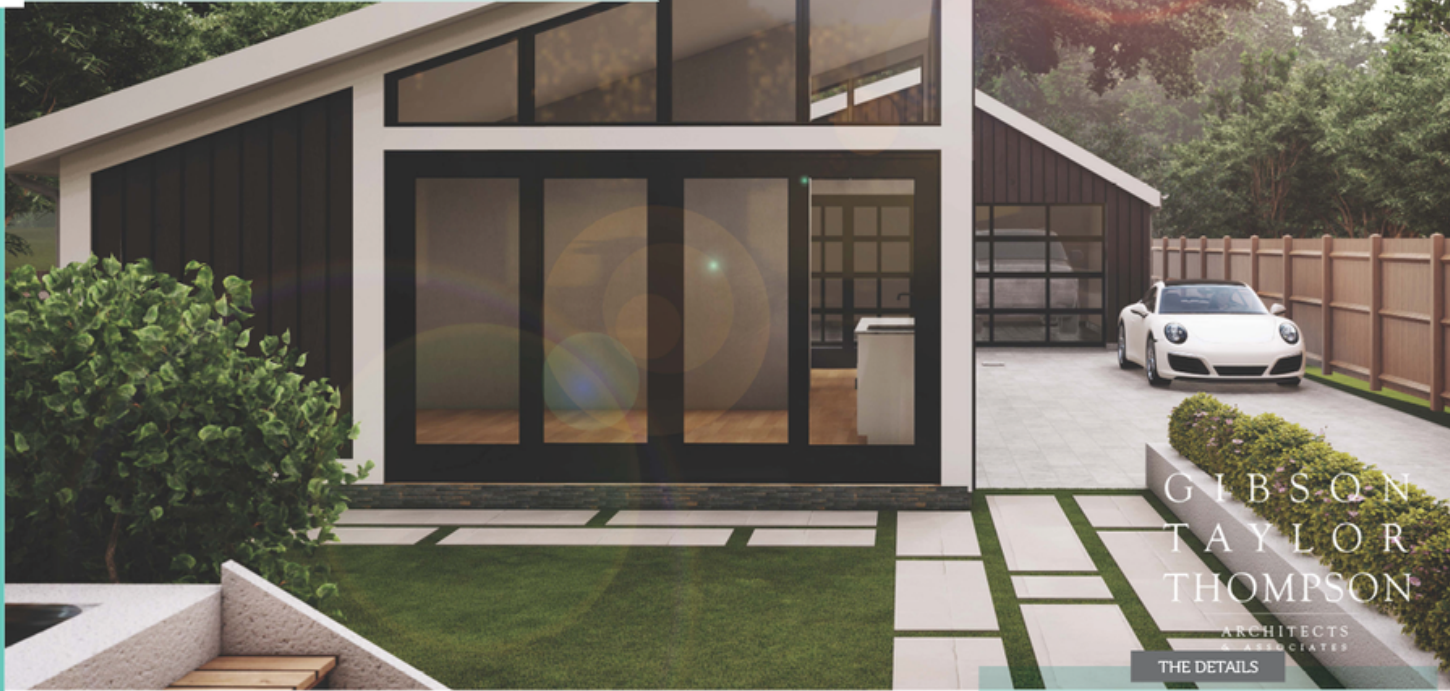


COME TO THE TOUR TO SEE
THE FINAL PRODUCT!

No.
6

Addition

316 McDowell Road • Lexington 40502
by TJH Construction



BEFORE



A small, unused backyard has turned into an indoor and outdoor living space with a detached garage. Our client never used his backyard for anything due to trees and shrubs being overgrown from the previous owner. He wanted a garage to park in and a space he and his friends could use to hang out. With the help of Gibson, Taylor, Thompson Architecture, we built a dreamy outdoor living space and a fun and inviting indoor living space for friends and family to visit and hang out.

- Andersen windows and doors
- Steam Shower
- Wet Bar
- Techo-bloc paver patio
- true masonry fireplace with real stone
- timbertech decking

MEET THE REMODELER



TJH CONSTRUCTION

TJH Construction, lead by Tyler Hughes and Mike Asay, have been renovating and building custom homes for over a decade. With a team of experienced craftsman, TJH takes the extra step in building and remodeling each project they touch with pride, catering to each and every client's wants and needs.

859-321-8080 | WWW.TJHCONSTRUCTIONPRO.COM



BEFORE PHOTOS



AFTER



GIBSON
TAYLOR
THOMPSON
ARCHITECTS
& ASSOCIATES



